

# PocketWizard Product Features

	Standard Triggering Radios			ControlTL® Radios				ControlTL® Accessories	
	Plus®X Transceiver	Plus® III Transceiver	MultiMAX® Transceiver	MiniTT1® Transmitter	FlexTT5® Transceiver	PowerST4* Receiver	PowerMC2** Receiver	AC3 ZoneController	AC9 AlienBees Adapter***
Transmit	●	●	●	●	●			w/MiniTT1 or FlexTT5	
Receive	●	●	●		●	●	●		w/Flex TT5
Auto-Sensing Transceiver	●	●			●				
Remote Flash Triggering	●	●	●		●	●	●		
Remote Camera Triggering	●	●	●		●				
Reverse Compatible	●	●	●	●	●	●	●		
Standard Channels	10	32	32	32	32	32	32		
ControlTL® Channels				20	20	20	20		
Zone Control				with AC3 or master Speedlite	with AC3 or master Speedlite				
Zones Transmit		A-B-C-D	A-B-C-D	A-B-C w/AC3	A-B-C w/AC3			A-B-C	
Zones Receive		A-B-C-D	A-B-C-D		A-B-C	A-B-C	A-B-C		A-B-C w/FlexTT5
Toggle Zones ON/OFF		●	●	with AC3	with AC3			●	
Canon E-TTL or Nikon i-TTL/CLS compatible				●	●			w/MiniTT1 or FlexTT5	
High Speed Sync (HSS)/Auto FP Sync				●	●				
HyperSync®	w/MiniTT1 or FlexTT5 as a transmitter	w/MiniTT1 or FlexTT5 as a transmitter	w/MiniTT1 or FlexTT5 as a transmitter	●	●	w/MiniTT1 or FlexTT5 as a transmitter	w/MiniTT1 or FlexTT5 as a transmitter		w/MiniTT1 or FlexTT5 as a transmitter
Rear Curtain Sync	w/MiniTT1 or FlexTT5 as a transmitter	w/MiniTT1 or FlexTT5 as a transmitter	●	●	●	w/MiniTT1 or FlexTT5 as a transmitter	w/MiniTT1 or FlexTT5 as a transmitter		w/MiniTT1 or FlexTT5 as a transmitter
Pre-Flash Boost				●	●				
PowerTracking				●	●	w/MiniTT1 or FlexTT5 as a transmitter	w/MiniTT1 or FlexTT5 as a transmitter	w/MiniTT1 or FlexTT5 as a transmitter	w/MiniTT1 or FlexTT5 as a transmitter
Manual Power Control				●	●	w/MiniTT1 or FlexTT5 as a transmitter	w/MiniTT1 or FlexTT5 as a transmitter	w/MiniTT1 or FlexTT5 as a transmitter	w/MiniTT1 or FlexTT5 as a transmitter
Learn Mode				●	●	●			
Remote Camera Wake Up/ Pre-Trigger		●	●		●				
Precision Delay Times			●						
Intervalometer/Time Lapse			●						
Multi-Pop Shooting			●						
Auto-Relay Mode	●	●	●		●				
Fast Mode		●	●						
Long-Range Mode		●	●						
Repeater Mode		●	●						
Lag Time Equalizer			●						
SpeedCycler			●	with AC3	with AC3	●	●		
LCD Readout		●	●				on E640 flash		
PocketWizard Utility (for updates)		●	USB enabled version	●	●	●	●		
Power	AA	AA/AC	AA/AC	CR 2450/PW-DC-N10 Cable	AA/AC	⊗ N/A	⊗ N/A	⊗ N/A	⊗ N/A
Sekonic DR & R Series Meters	10 Standard	32 Standard	32 Standard	N/A	32 Standard	32 Standard/ ‡20CTL A-B-C	32 Standard/ ‡20CTL A-B-C	N/A	N/A
Sekonic Meters using RT32N or ‡RT32CTL Transmitter		A-B-C-D	A-B-C-D		32 Standard/ ‡20CTL A-B-C	A-B-C	A-B-C		



## PocketWizard Cables

### FLASH CABLES

For all popular brands or flashes

### REMOTE CAMERA CABLES

-ACC for FlexTT5, MultiMAX,  
Plus III, PlusX

Standard Cables

Pre-Trigger w/switch

[PocketWizard.com/support/cable\\_finder](http://PocketWizard.com/support/cable_finder)

\* For use with Elinchrom RX Studio Flashes  
 \*\* For use with Paul C. Buff Einstein™ E640 Studio Flash. Uses  
 Flash Controls - Data Panel for adjustments  
 \*\*\* For use with Paul C. Buff AlienBees and White Lightning  
 Studio Flashes



**Choose a receiver for remote camera triggering:**



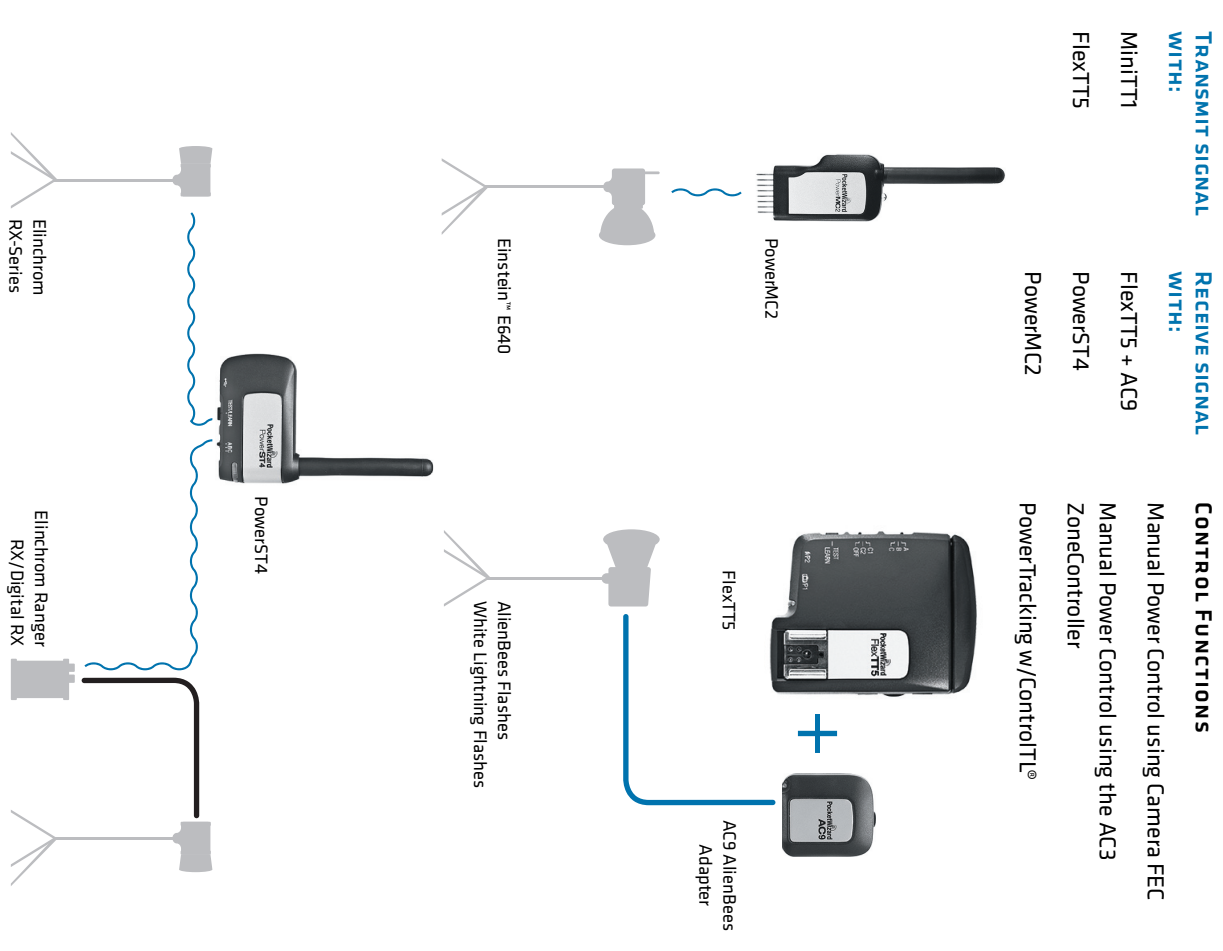
**Choose a receiver for remote flash triggering:**

- TTL with Canon E-TTL or Nikon i-TTL flash and FlexTT5
- Standard manual triggering with PlusX, Plus III, or MultiMAX

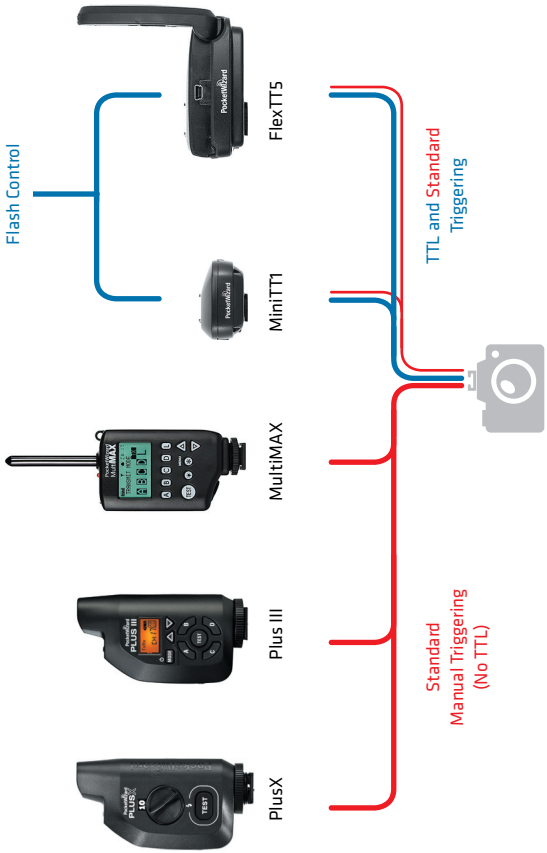


# Studio Flash Triggering

## Remote Power Control with PocketWizard Radios and Accessories



Standard Manual Triggering (No TTL)



TTL / Manual Flash Control



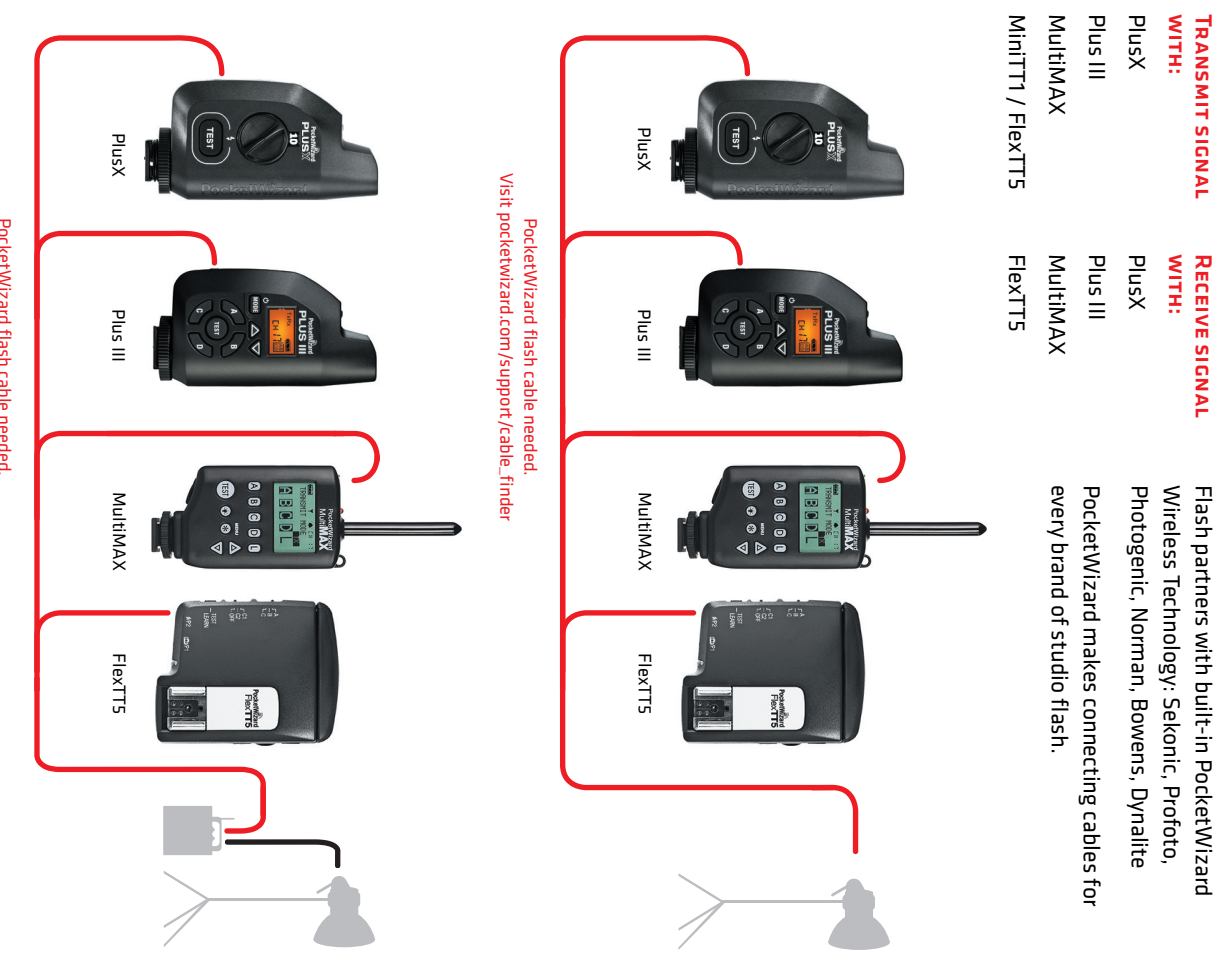
**Choose a transmitter for on-camera triggering control of remote flashes & cameras:**

- ControlTl® System with Canon E-TTL / Nikon i-TTL DSLR cameras
- Standard Triggering with all camera systems

# Wireless TTL and Standard Triggering



## Standard Triggering with PocketWizard Radios



PocketWizard flash cable needed. Visit [pocketwizard.com/support/cable\\_finder](http://pocketwizard.com/support/cable_finder)